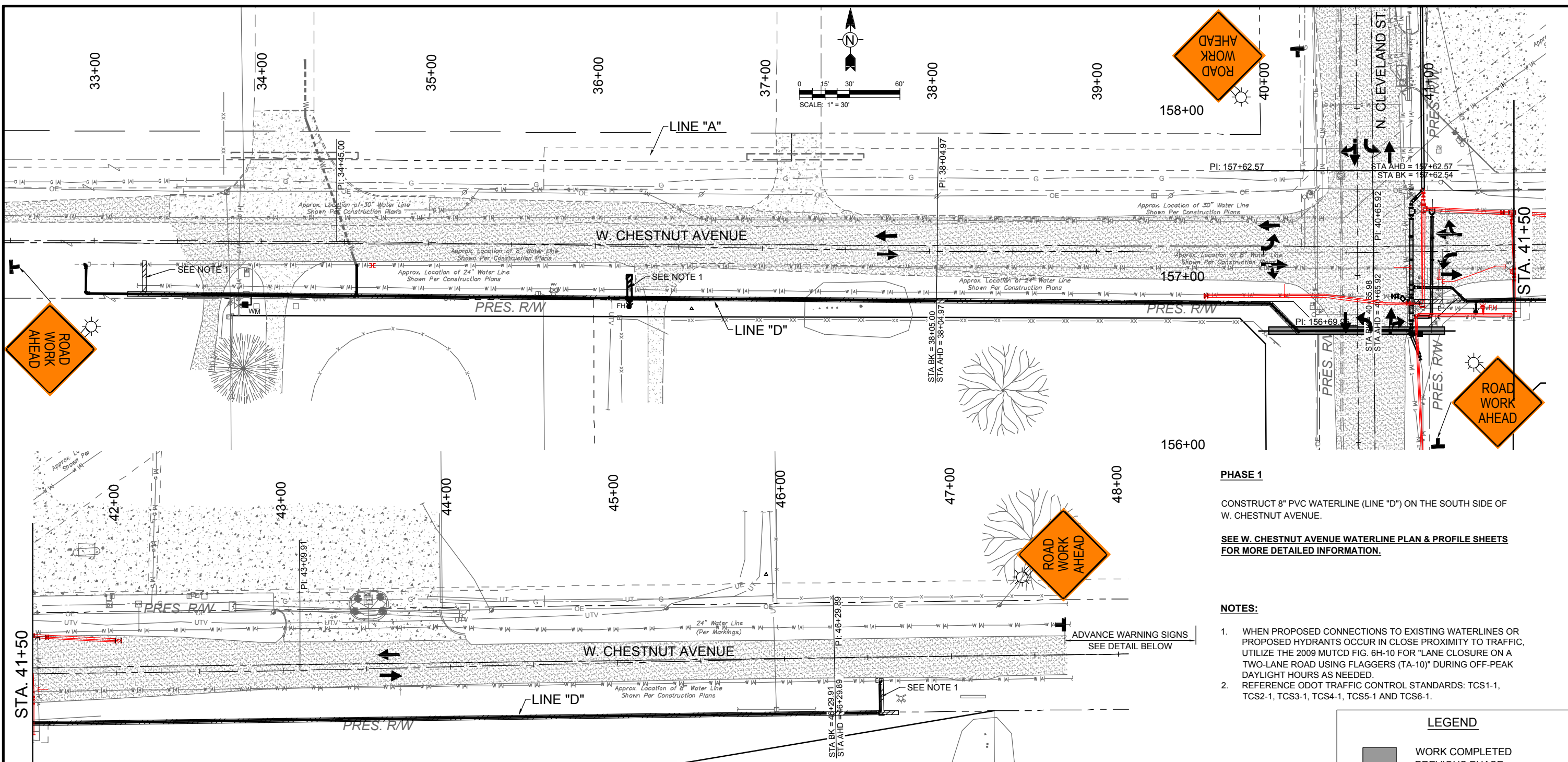


9/22/2017 2:03:24 PM - P:\277121\31-27712-13001\CAD\DWG\WATERLINE\PLANS\CONSTR\SEQ.PH1.DWG - SCHUMACHER, MIKE

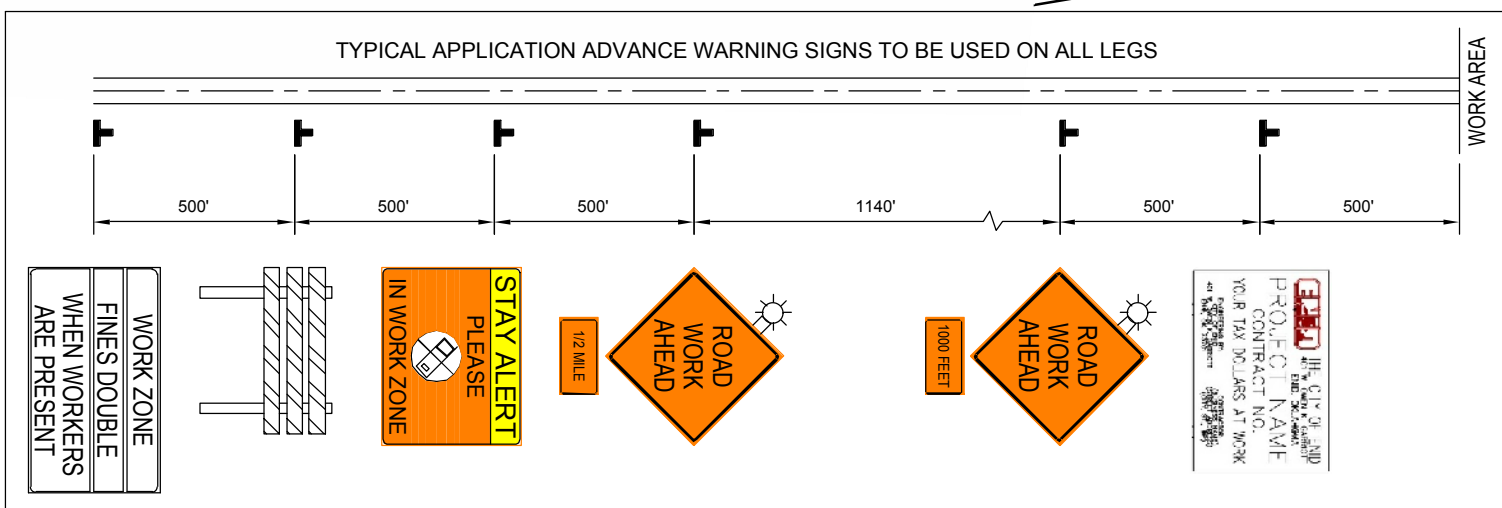


PHASE 1

CONSTRUCT 8" PVC WATERLINE (LINE "D") ON THE SOUTH SIDE OF W. CHESTNUT AVENUE.

SEE W. CHESTNUT AVENUE WATERLINE PLAN & PROFILE SHEETS FOR MORE DETAILED INFORMATION.

- NOTES:**
1. WHEN PROPOSED CONNECTIONS TO EXISTING WATERLINES OR PROPOSED HYDRANTS OCCUR IN CLOSE PROXIMITY TO TRAFFIC, UTILIZE THE 2009 MUTCD FIG. 6H-10 FOR "LANE CLOSURE ON A TWO-LANE ROAD USING FLAGGERS (TA-10)" DURING OFF-PEAK DAYLIGHT HOURS AS NEEDED.
 2. REFERENCE ODOT TRAFFIC CONTROL STANDARDS: TCS1-1, TCS2-1, TCS3-1, TCS4-1, TCS5-1 AND TCS6-1.



CONTRACTOR SHALL MAINTAIN ACCESS TO ALL BUSINESSES AND DRIVEWAYS

LEGEND	
	WORK COMPLETED PREVIOUS PHASE
	WORK AREA
	TYPE III BARRICADE w/ TYPE "A" WARNING LIGHTS R11-2 (LANE)
	DRUMS w/ W1-8(L)
	CHANNELIZING CONE
	SIGNAGE
	DIRECTION OF TRAVEL

DESIGN	MVS
DRAWN	AKR
CHECKED	MLD
APPROVED	MLD
SQUAD	

CITY OF ENID
TCP - SEQUENCE OF CONSTRUCTION PHASE 1

CITY PROJECT: W-1406B